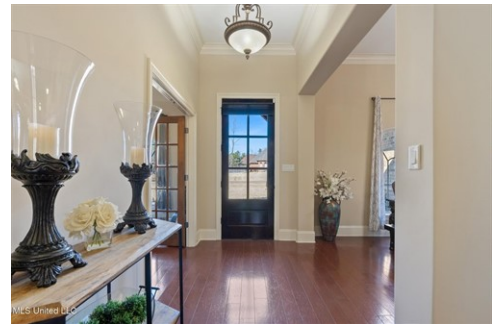




\$ 399,000



14029 Knightsbridge Ln, Olive Branch, MS 38654

- » Beds: 4 | Baths: 3 Full, 1 Half
- » MLS #: 10191576
- » Single Family | 3,112 ft² | Lot: 41,818 ft² (0.96 acres)
- » More Info: [14029KnightsbridgeLn.IsForSale.com](https://www.14029KnightsbridgeLn.IsForSale.com)



Jennie Holliday

(901) 334-6961 (mobile)
 (662) 548-2000 (office)
holliday@collins-maury.com
<https://www.hollidaysellshomes.com>



Coldwell Banker Collins-Maury
 3276 Goodman Rd E
 Southaven, MS 38672
 (662) 548-2000

\$21,000 MASSIVE REDUCTION!!! now offered at \$399,000 Discover this stunning one-level home offering 4 bedrooms & 3.5 baths, perfectly situated on .96 acres in a tranquil setting with award-winning Center Hills school & no city taxes. 2nd bedroom has its own bath with patio access could be mother-in-law suite. Separate living room & dining room office/study with elegant French doors, hearth room with gas fireplace, master located on the opposite side of the house has a private patio access & luxurious bath with a separate tub & walk-in shower, gourmet kitchen with custom walnut cabinets, granite countertops, wall oven, gas cooktop, a walk-in pantry, microwave, stylish backsplash, breakfast bar, breakfast area, & center island, laundry room with ample cabinet storage, 3rd & 4th bedrooms sharing a jack & jill bath. new interior paint. House is eligible located in the USDA area (no-money-down mortgage loan) (If you looking for a property outside the city limits yet close to amenities, this home offers the perfect blend of country living & modern comforts. Come take a look!

